



TLI-1550HT

- > RECHARGEABLE
- > High power + high energy
- > Extremely low self discharge rate
- > Charging possible at extreme temperatures

Performance Data

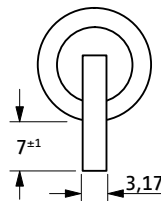
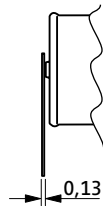
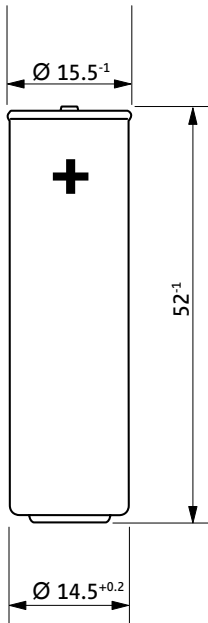
(Typical values for batteries stored at +25 °C for one year)

System	Lithium Intercalated Compounds	
Nominal voltage	4 V	
Max. capacity	500 mAh	
Max. continuous discharge current	5 A	
Discharge end voltage	2.2 V	
Max. charge voltage	4.1 V	
Max. charge current	100 mA	20 mA
Temperature range	-20 °C ... +50 °C	-40 °C ... +135 °C
Cell impedance @ 1 kHz, RT	max. 100 mΩ	
Nominal energy	1.4 Wh	
Weight	20 g	

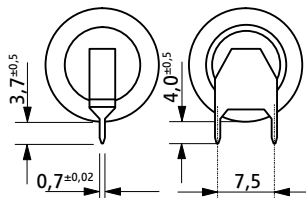
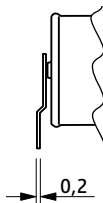
For more information please refer to page 48.



TLI-1550HT/S



TLI-1550HT/T



TLI-1550HT/TP

Available Terminations

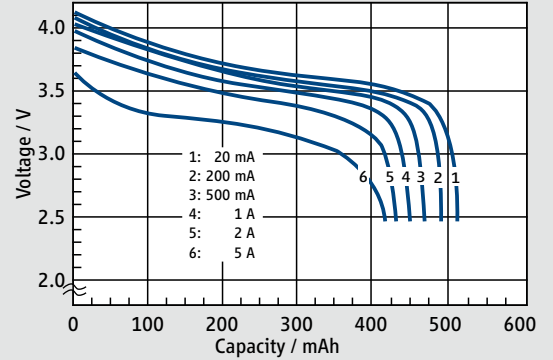
Termination	Standard	Catalogue No.
TLI-1550HT/S	Standard	on request
TLI-1550HT/T	Tags*	on request
TLI-1550HT/TP	Polarized tags*	on request

* versions with PTC SRP 200 on request

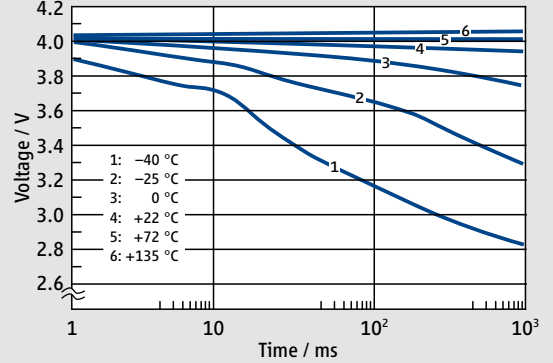
WARNING:
 Fire, explosion,
 and severe burn hazards.
 Do not disassemble, heat
 above 150 °C, short circuit,
 incinerate or expose
 contents to water.

Do not charge above 4.1 V.
 Please refer to TLI-guidelines.

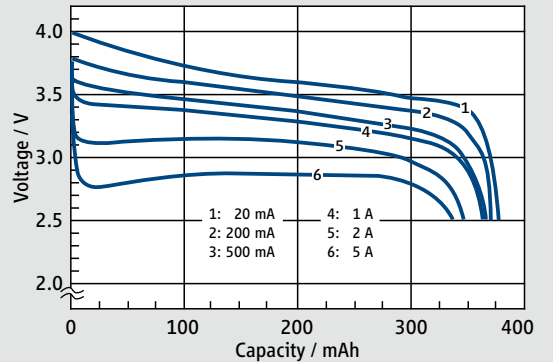
Discharge Curves at RT



Pulse Capability at 1 A



Discharge after 24 h at 135 °C



Open Circuit Voltage vs. Capacity

